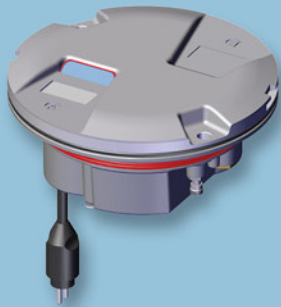


## LED INSET TOUCHDOWN ZONE LIGHT



### APPLICATIONS

Touchdown Zone for ICAO CAT I, II and III, FAA and military runways.

### BENEFITS

- 60,000 hours LED rated life at full intensity, but over 100,000 hours in field operating conditions.
- In new installations, LED lights mean smaller loads, smaller CCRs and transformers, thus lower life cycle costs.
- Light output is variable like a traditional halogen lamp, as indicated by FAA "Engineering Briefing No.67".
- Fully compatible with existing AFL infrastructure\*.
- Designed with simplicity allowing longer maintenance intervals and fewer spare parts.
- No use of sealing compound to fix the prisms in the dome. Use of gaskets to set the prisms in the dome makes their replacement quick and easy.
- No optical adjustment after LED module or prism replacement.
- Pressure valve for watertightness test after overhaul.
- Compatible with CCRs designed in compliance with IEC or FAA requirements.

\* For monitored fixtures, isolation transformer max size: 200 VA.

### COMPLIANCES

**FAA:** L-850B(L) AC150/5345-46 and EB No.67

**ICAO:** Annex 14 - Volume I Fig. A2-5

**EASA:** CS-ADR-DSN, Book 1, Fig. U-9

**IEC:** TS 61827

**NATO:** STANAG 3316

**CAA:** CAP 168

**IAAE:** TP312

**CASA:** Manual of Standards Part 139



### TECHNICAL FEATURES

- Rugged electronics built tough for high resistance to shock and vibration.
- Automatic adaptation to the 50 or 60 Hz frequency of the supply current.
- Surge protection device is provided to protect the electronics as required by FAA "Engineering Briefing No.67".
- Continuous internal fault detection.
- 0.25" (6.35 mm) limited protrusion above the pavement reduces vibrations to aircrafts and to the fixture itself, increasing its life expectancy.
- Smooth outer dome profile makes the light less susceptible to snowplough blades.
- Unidirectional, 8" dia.
- Aluminum forged dome and die cast lower cover make the fixture sturdy, but lightweight for easier handling in the field.
- O-Ring is provided to avoid dirt deposits between the fixture and base.
- IP67 protection.
- Temperature range: -55 °C (-67 °F) to +55 °C (131 °F).

### INSTALLATION

- Suitable for 12" dia. bases.
- Adaptor ring for installation on 12" dia. bases.
- Specific tools available for easy and precise installation.

## PHOTOMETRIC PERFORMANCE

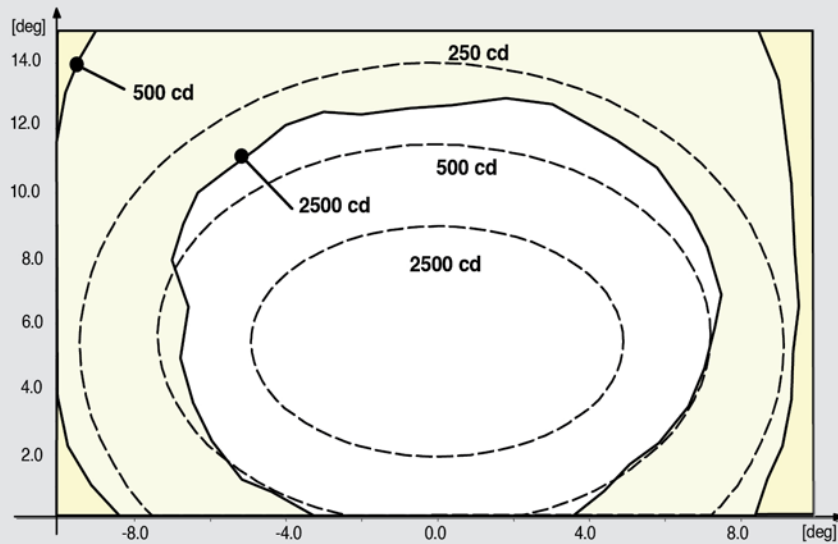


Figure 1 - ICAO A2-5 – White

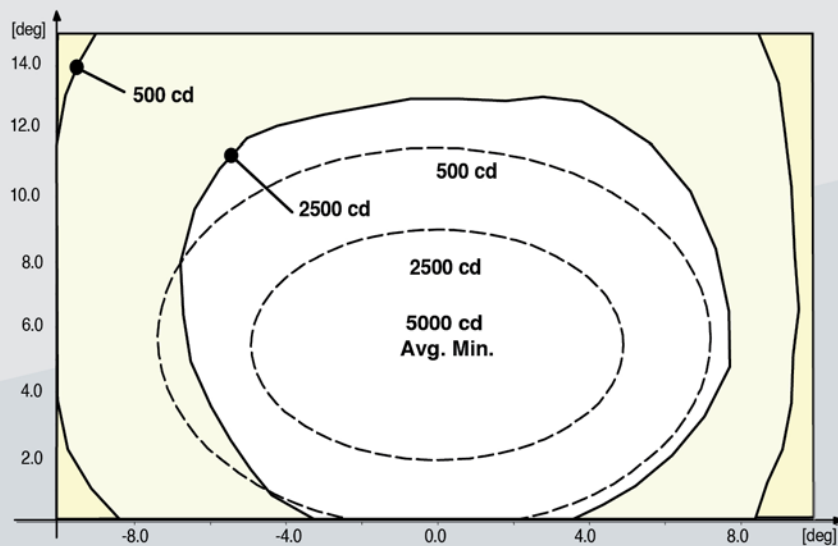


Figure 2 - FAA L-850B – White

## POWER CONSUMPTION (maximum value among all fixture configurations)

Power Factor >0.98	Primary conductor isolation transformer		Fixture	
w/o Arctic kit	28.5 W	28.6 VA	17.5 W	17.6 VA
with Arctic kit	55.0 W	55.1 VA	39.8 W	39.9 VA

## TECHNICAL DRAWING

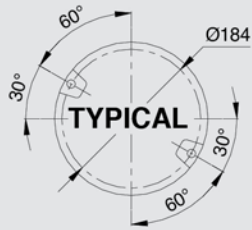


Figure 3 - Light Fixture 8" dia.

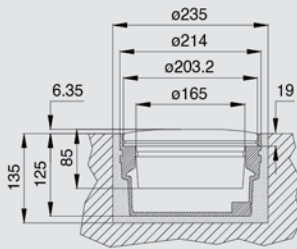


Figure 4 - Shallow Base 8" dia

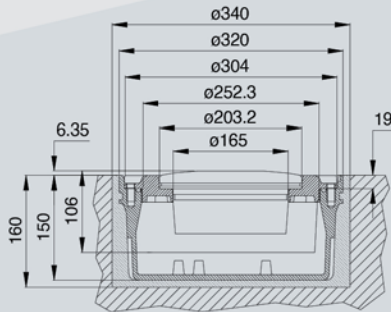


Figure 5 - Shallow Base 12" dia

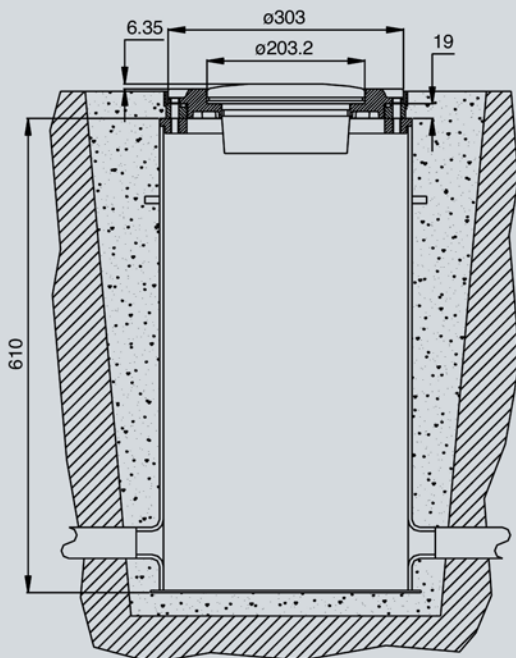


Figure 6 - L-868 Deep Base 12" dia.

## PART NUMBER IDENTIFICATION

LIRD - F - L - O - M - A

Basic P/N: \_\_\_\_\_

Compliance: \_\_\_\_\_

I = ICAO

F = FAA (cable L=22cm)

L = FAA (cable L=46cm)

Toe-in\*: \_\_\_\_\_

R = Left

L = Right

S = Straight

Mounting Assembly: \_\_\_\_\_

O = No Mounting Assembly

R = Adaptor Ring 8"-12" dia

Monitoring: \_\_\_\_\_

O = Without Monitoring

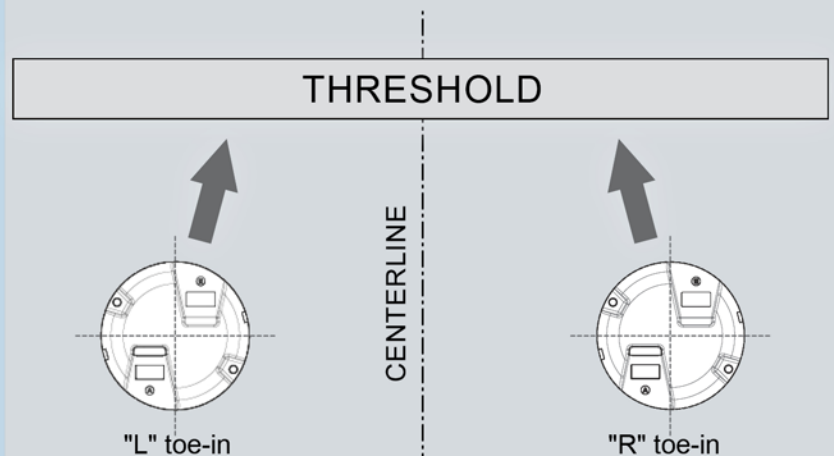
M = With Monitoring

Arctic Kit: \_\_\_\_\_

O = Without Arctic Kit

A = With Arctic Kit

(/) The beam aiming is not field adjustable



## RENEWAL PARTS FOR LIGHT UNIT

No.	Description	Qty
1	Dome.....	1
2	O-Ring for dome.....	1
3	O-Ring for lower cover.....	1
4	Arctic kit heater.....	1
5	Arctic kit thermostat.....	1
6	Lower cover.....	1
7	Valve for watertightness test.....	1
8	Prism gasket.....	1
9	Prism.....	1
10	Prism holder gasket.....	1
11	Mounting plate.....	1
12	Reflector with hardware.....	1
13	LED module with accessories.....	1
14	Lower cover gasket.....	1
15	FAA L-823 plug.....	1

**Refer to the relevant technical manual for the complete list of the available spare parts.**

## ACCESSORIES

315.1230	Base L-868 type, class IA, size B, 24" deep*.
315.1420	Flange ring with pavement dam for L-868 base, size B, with O-Ring and bolts.
152.5251	Shallow base, 8" dia., one cable lead, with hardware
152.8110	Shallow base, 12" dia., one cable lead, with gasket and hardware.
152.6116	Adaptor Ring 8"-12" dia. complete with hardware
GMMMNO076	Adaptor Ring 8"-12" dia. complete with hardware for FAA versions
712.1034	Setting material for shallow base, 10 lt
712.1035	Quartz for shallow base, 25 kg
332.4301	Positioning jig for 8"-12" dia. shallow base, without optical device.
332.4351	Optical device for positioning jig to allow a very precise light unit orientation.
332.4330	Watertight/shockproof plastic case complete with positioning jig for base and optical device.
332.4140	Lifting tool (2 pieces to work properly).
332.4230	Lifting tool (with double hoop).

(\*) Sectional bases may be required depending upon the paving technique

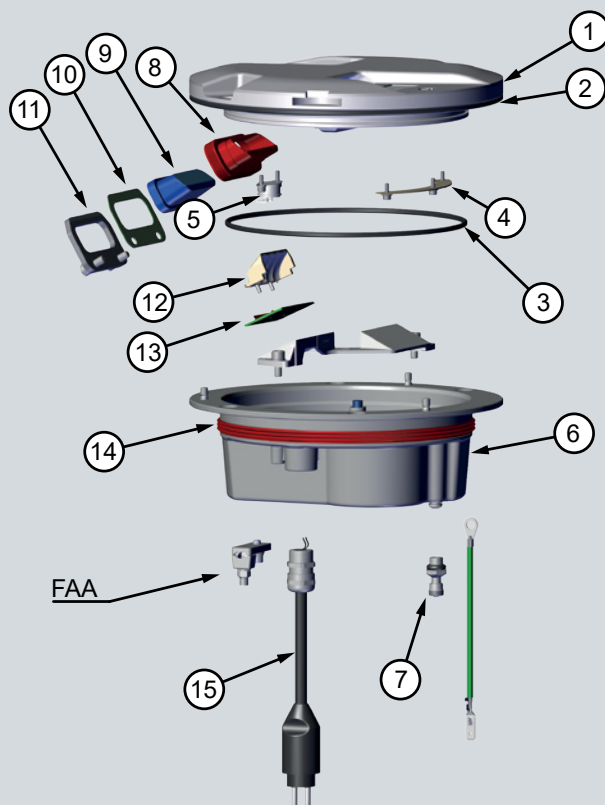
Visit our website:



Get in touch:  
<https://multielectric.com/contact-us/>

We reserve the right to change the design or specification data without notice

## EXPLODED VIEW DRAWING



**For information about isolating transformers and connectors, please see the specific catalogue pages.**

## SHIPPING WEIGHTS AND VOLUMES

	Light unit	Light unit & adaptor ring	Shallow base
<b>Weight [lbs (kg)]</b>	5.6 (2.7)	12.9 (5.85)	7.1 (3.2)
<b>Volume [ft³ (m³)]</b>	0.24 (0.007)	0.45 (0.013)	0.24 (0.007)

### Multi Electric Mfg., Inc.

10501 Franklin Avenue - Suite 400  
 Franklin Park, IL 60131 (USA)

Email: [sales@multielectric.com](mailto:sales@multielectric.com)  
 Phone: +1 773-722-1900  
 Fax: +1 773-722-5694

A company of ARETÈ COCCHI TECHNOLOGY

