

SFL

Sequenced Flashing Lights

Complies with

FAA-E-2689

ALSF-2

FAA-E-2325

MALSR

FA-9994 Type Acceptance

FAA AC-150/51

REIL

ICAO Annex 14

General Information

The Multi Electric Strobe system is composed of a Strobe Optical Head, Strobe Power Supply, Strobe Controller Cabinet, Junction Boxes and Aiming Instrument.

The typical approach system utilizes three intensity setting (Steps) low, medium and high. Single intensity strobes are available for special applications. The Multi Electric Sequenced Flashing Lights can be configured for 3, 5, 8, 15 and 21 strobe stations.

The strobe systems are enclosed in environmentally protected enclosures to NEMA 4 standards to allow for outdoor mounting on frangible structures.

The optical heads can be mounted on 2" EMT with frangible couplings or on frangible light towers. The power supplies and junction boxes are designed to mount at the base of short towers or on fixed platforms for high tower installations.

The junctionboxes contain sufficient means for terminating the strobe control lines and power sources for up to 21 strobe systems.

The main strobe control cabinet is designed to be mounted on exterior frangible structures off centerline of in shelters specifically designed to airfield applications.



Strobe Optical Head



Strobe Power Supply

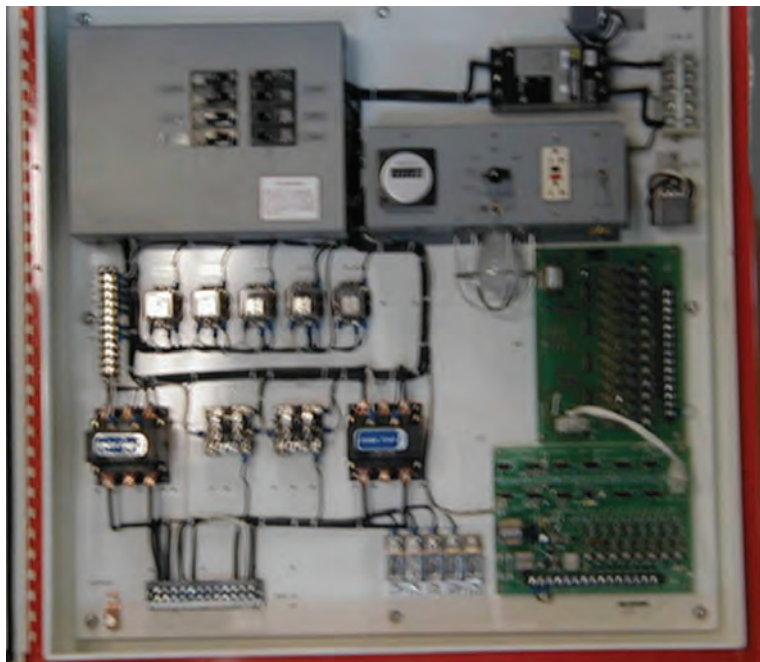
Environmental:

Temperature -55°C to +70°C (-67°F to +158°F)
Humidity: 0 to 95% RH Sea level to 3,048M (10,000 ft.)
Altitude: Sea Level to 3,048M (10,000 ft.)

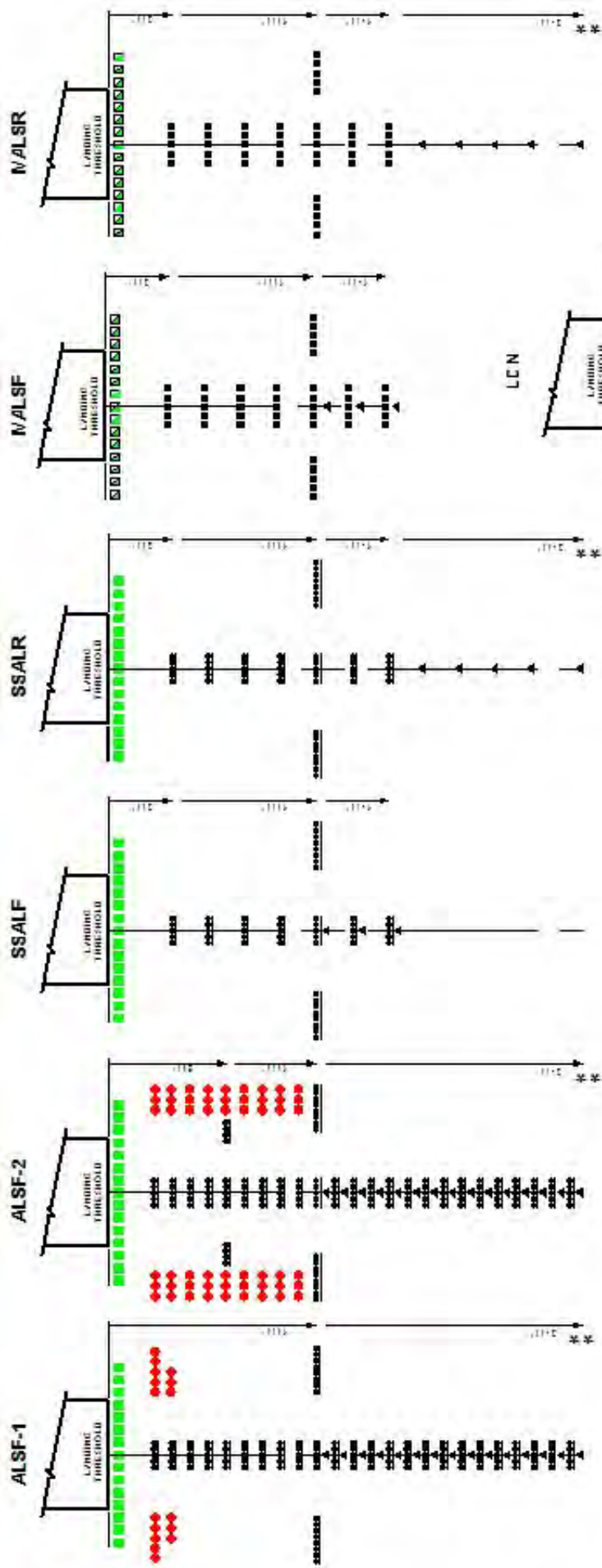
Input Voltage: 216VAC to 260VAC 50/60Hz 240VAC Nominal

Strobe Intensity:

Intensity Setting	Maximum Effective Intensity (Candelas)	Minimum Effective Intensity (Candelas)
High	20,000	5,000
Medium	2,000	500
Low	600	150
Pattern Width	± 30° Min.	
Pattern Height	± 10° Min	



*Strobe Control Cabinet
(21 Station ALSF Shown)*



LEGEND

- ALSF-1 APPROACH LIGHTING SYSTEM, WITH SEQUENCED FLASHING LIGHTS - CAT. OR CAT. - II/III/IV
- ALSF-2 SAME AS ABOVE, CAT. - STANDARD
- SSALF 2 MILE SHORT APPROACH LIGHTING SYSTEM, SEQUENCED FLASHING LIGHTS
- SSALR SAME RUNWAY ALIGNMENT NO CATEGORY LIGHTS - CAT. - STANDARD
- MALSF MED LUM INTENSITY APPROACH LIGHTING SYSTEM, SEQUENCED FLASHING LIGHTS
- MALSR SAME RUNWAY ALIGNMENT NO CATEGORY LIGHTS - CAT. - STANDARD
- LDN LEAD IN LIGHTS

SYMBOL KEY

- | | |
|----|---|
| | THRESHOLD LIGHTS MULTIPLE TYPE |
| | STEADY BURNING RED LIGHTS |
| | HIGH STEADY BURNING WHITE LIGHTS |
| | MEL STEADY BURNING WHITE LIGHTS |
| | SEQUENCED FLASHING LIGHTS |
| | THRESHOLD LIGHTS SERIES TYPE |
| | ALSF 490NS CENTERS |
| | SSALF 16 ON 16 CENTERS |
| * | RED SIDE ROW LIGHTS ALIGNED WITH TOUCH-DOWN ZONE LIGHTS ON RUNWAY |
| ** | SYSTEMS MAY BE EXTENDED TO 3000' IN LENGTH IF REQUIRED |

Ordering Information

Main Equipment

Strobe Control Cabinet
Strobe Power Supply
Strobe Optical Head
Strobe Lamp
Aiming Instrument
Junction Box JB-2

Model Number

CPSF-SSALR/ALSF
550430
570330
570330-14
899
7218

Spare /Renewal Parts

Strobe Lamp
Lamp Socket
Capacitor 25uF
Capacitor 3uF
Capacitor 1 uF
Capacitor .25uF
High Voltage Bridge Rectifier
Strobe Bleeder Board
Trigger Relay
Master Timer PWA
Slave Timer PWA

Part Number

570330-14
55316
550430-25
550430-22
550430-21
550430-20
55012
550345
550350-30
571338
572338

Contact a Sales representative to discuss site specific installation hardware and accessories

We reserve the right to change design or specification data without notice