

**Instruction Sheet and
Parts List**

For

**Medium Intensity
Taxiway and Runway
Elevated Lighting Fixtures**

Series 6170

**Type:
L-861 / L-861T & L-861E**

**Per
FAA: AC 150/5345-46**

Manufactured By:
Multi Electric Mfg. Inc.
4223-43 West Lake Street
Chicago, Illinois 60624
(773)722-1900 Tel.
(773)722-5694 Fax
sales@multielectric.com

SAFETY NOTICE

The attention of operation and maintenance personnel is directed to FAA Advisory Circular 150/5340-26 "Maintenance of Airport Visual Aid Facilities" for instructions on safety precautions. Personnel must observe the safety regulations at all times. While every practicable safety precaution has been incorporated in this equipment, this equipment employs voltages which are dangerous and may be fatal if contacted by operating personnel. Extreme caution should be exercised when working with the equipment. The following rules must be observed:

KEEP AWAY FROM LIVE CIRCUITS!

Operating and maintenance personnel must at all times observe all safety regulations. Do not change lamps or make adjustments inside equipment with the lighting circuit on. See FAA Advisory Circular 150/5340-26 concerning safety.

WARNING

Dangerous potentials up to 5000 VOLTS exist in the primary circuit. Turn power off and tag switches whenever maintenance personnel are inspecting, cleaning, or maintaining light units.

RESUSCITATION!

Maintenance personnel should familiarize themselves with the technique for resuscitation.

WARNING

Under normal operation conditions, the temperature of the light unit may exceed 100 C. Such temperatures will cause severe burns to maintenance personnel if they contact the equipment. Allow sufficient time for the light units to cool, after the power has been turned off, before attempting any maintenance procedure.

FIXTURE INSTALLATION

1. Remove the fixture body, frangible coupling, gasket, and 1-inch tube from the carton.

Note: If the fixture has been ordered with an extra height option, the tubing may be packaged separately.

2. Remove the gasket and the lens clamp band from the fixture body.
3. Slide one end of the 1-inch tube over the cable assembly and into the fixture slip-fitter until the slip-fitter bottoms against the tube.
4. Slide the frangible coupling over the cable assembly and onto the other end of the 1-inch tube until it bottoms against the tube.
5. Connect the plug from cable assembly into the mating female receptacle in Base Plate or Stake Assembly.
6. Slide the Frangible Coupling down over the plug and tighten it into Base Plate Assembly or Stake Assembly until coupling bottoms out. Push any extra cable length into the 1-inch tube. Tighten the tube to the coupling with the setscrew in the coupling.
7. Rotate the fixture on the 1-inch tube until the arrows with "Runway Housing Body" points toward the runway centerline. Tighten the Housing Body to the 1-inch tube with the 2 set screws on the side of the slip-fitter.
8. Level the Housing Body on the slip-fitter by placing a small level across the points marked "Sight and Level here" and adjust the two round head screws in a line parallel to the runway until bubble of level is centered. Repeat the leveling process across the marks "Level Here".

TO INSTALL LAMP

9. Carefully install the lamp into the lamp socket.

Note: Do not touch the glass of the lamp with bare hands when installing, as premature lamp failure will result.

TO INSTALL LENSES

10. Place the gasket on the Housing Body.
11. Set the Lens on the Housing Body so that the two locating pins align with the two recesses of the lens bottom flange.
12. Fit the lens clamp band over the lens and Housing Body flange. Fit the clamp spring over the clamp catch and push down the lever to tighten band together.

TO RE-LAMP

13. Remove the lens clamp band and lens from the fixture.
14. Remove the existing lamp and insert new lamp as in step 9 above. Check to make sure that the gasket is still in place. Replace lens and lens clamp band as in steps 11 and 12 above.

Accessories

| <u>Catalog Number</u> | <u>Description</u> |
|-----------------------|---------------------------------|
| 1080 | Baseplate, 1-1/2" tap, Aluminum |
| 1935 | Baseplate, 1-1/2" tap, Steel |
| 1090 | Stake Assembly, 1-1/2" tap |
| 9621 | 30W 6.6A T10 Incandescent Lamp |
| 9623 | 45W 6.6A T10 Incandescent Lamp |
| 9699-1 | 30W 6.6A Bi-pin Quartz Lamp |
| 9699-2 | 45W 6.6A Bi-pin Quartz Lamp |
| 9620-1 | 40W, 120V Traffic Signal Lamp |

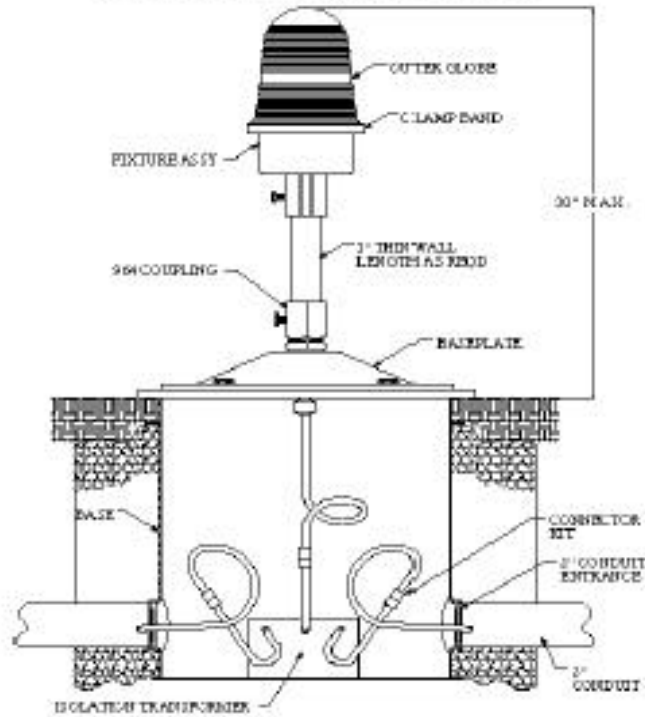
Replacement Parts

| <u>Catalog Number</u> | <u>Description</u> | <u>Catalog Number</u> | <u>Description</u> |
|-----------------------|--|-----------------------|-------------------------------|
| 6170 | Basic Fixture Assembly, Incandescent | 1090-01 | Mounting Stake, Angle |
| 6170-H | Basic Fixture Assembly, Quartz | 1090-03 | Stake Fitting, 1-1/2" tap |
| 6170-M | Basic Fixture Assembly, 120V | 6170H-04 | Lamp Support Standoff, Quartz |
| 964 | Frangible Coupling | 861-FA | Amber Lens |
| 980-5 | Lamp Socket, Incandescent, prefocused | 980-FB | Blue Lens |
| 6370-04 | Lamp Socket, Quartz, bi-pin | 861-FG | Green Lens |
| 4610-3 | Lamp Socket, Incandescent, screw shell | 861-FR | Red Lens |
| 6170-05 | Lens Clamp Band | 861-FW | White (Clear) Lens |
| 6183-07 | Lens Gasket | 861-FAR | Amber/Red Lens |
| 1170-16 | Cable Assembly, 16" long | 861-FAW | Amber/White Lens |
| 1170-32 | Cable Assembly, 32" long | 861-FGR | Green/Red Lens |
| 1070-08A | Tubing, 14-inch fixture | 980-FBO | Blue/Obscure Lens |
| 1070-08B | Tubing, 20-inch fixture | 861-FRB | Red/Blue Lens |
| 1070-08C | Tubing, 24-inch fixture | 861-FRW | Red/White Lens |
| 1070-08D | Tubing, 30-inch fixture | 962-2 | Baseplate Gasket |

TYPICAL INSTALLATIONS

BASE MOUNTED MARKER LIGHT

FIXTURE SHOWN WITH OPTIONAL EXTRA HEIGHT



STAKE MOUNTED MARKER LIGHT

FIXTURE SHOWN WITH OPTIONAL EXTRA HEIGHT

